



Athlete Info Packet

Thank you for signing up for the 2024 Santa to the Sea Half Marathon, Quarter Marathon, 5k and kids 1k taking place on December 8th, 2024. Please review all information in this packet well before race day to make your race weekend a smooth and positive experience.

- Visit the Santa to the Sea Half website for up-to-date info!
- Read all information and look at all maps (**Hint use the Table of Contents to Navigate to your Specific Event Info if needed)
- Bring a \$20 unwrapped gift for the toy drive!
- Bring Photo ID or copy of ID for any packet you are grabbing to packet pickup, NO ID, NO PACKET!!!!
- LOOK AT THE PARKING MAP(s) AND HAVE A PLAN A AND PLAN B COME RACE MORNING-Some lots might be full once you arrive.
- Oxnard Police would like to remind you to pay attention to your surroundings and watch for cars at all times and obey orders from officers and event staff/volunteers

Table of Contents (Click the Titles below to navigate straight to that content)

EVENT SCHEDULE	5
Free Packet Pickup (All Events)	6
Time/ Location.....	6
Packet Pick Up Parking.....	6
Race Day Packet Pickup (Upgrade Option).....	7
Race Day Registration (Not an Option).....	7
Bib By Mail.....	7
Half Marathon	8
Start Time/ Location.....	8
Course Description.....	8
Aid Stations.....	9
Bathrooms.....	9
Course Map.....	10
Shuttles.....	11
Return Shuttles.....	11
Half Marathon Start Line Parking.....	11
Athlete Drop Off for Half Marathon.....	12
Finishers Medals (not to scale).....	13
Awards.....	13
Costume contest.....	14
Pace Teams.....	14
Gear Check.....	15
Quarter Marathon	16
Start Time/ Location.....	16
Course Description.....	16
Aid Stations.....	16
Bathrooms.....	16
Course Map.....	17
Shuttles.....	18

Return Shuttles	18
Quarter Marathon Start Line Parking.....	19
Athlete Drop Off Quarter Marathon.....	19
Finishers Medals (not to scale)	20
Awards.....	20
Costume contest	21
Wave Starts.....	21
Gear Check	21
5k.....	22
Start Time/ Location.....	22
Course Description	22
Aid Stations	22
Bathrooms.....	22
Course Map.....	23
Shuttles	24
5k Start line Parking.....	24
Athlete Drop Off 5K	24
Finishers Medals (not to scale)	25
Awards.....	25
Costume contest	26
Kids 1K.....	27
Start time/ Location.....	27
Race Day Packet Pick Up	27
Course Description	27
Aid Stations	27
Bathrooms.....	27
Course Map.....	28
Spectators/ Parents	28
Kids 1K Start line Parking	29
Costume Contest	29
Diaper Dash.....	30

Start time/ location.....	30
Course Description	30
Rules.....	30
Awards.....	30
Diaper Dash Parking	30
Photos	31
Timing.....	31
Live Tracking.....	31
Spectators	31
Spectator Parking.....	31
Toy Drive.....	32
What to Wear	32
Food and Water	32
Inclement Weather	32
Santa's Village/ Finish line	32
Contact Us.....	33

Santa to the Sea Half Marathon and 5k

EVENT SCHEDULE

Saturday December 07

- 10:00 AM Packet Pickup and Santa's Village Opens
- 2:00 pm Diaper Dash start (at main stage in Santa's Village)
- 4:00 pm Packet Pickup and Santa's Village Closes

Sunday December 8

- 5:15 AM First shuttle departs The Palms Shopping Center for the ½ marathon, and ¼ marathon start lines
- 7:00 AM Last Shuttle departs The Palms Shopping Center
- 7:30 AM Half Marathon, and 5k Start**
- 7:40 AM Quarter Marathon Start**
- 8:30 AM Kids 1k Start**
- 9:00 AM Return Shuttles to The Palms Shopping Center begin
- 9:00 AM 5k Costume Contest awards ceremony on Santa's Village Main Stage
- 9:15 AM Kids Costume contest awards ceremony on Santa's Village Main Stage
- 10:45 AM Half Marathon/ Quarter Marathon Costume Contest awards ceremony on Santa's Village Main Stage
- 1:00 PM Returning Shuttles to The Palms Shopping center end

Santa to the Sea Half Marathon and 5k

Free Packet Pickup (All Events)

Half Marathon | Quarter Marathon | 5k | Kids 1K | Diaper Dash |

Time/ Location

SATURDAY December 7th, 2024 from 10:00AM-4:00 PM

There is **no race day (Sunday) Packet Pickup unless you ***purchased*** this option during registration.

Location: Marine Emporium Landing: 3600 Cabezone Cir. Oxnard, CA 93035
YOU MAY PICK UP MULTIPLE PACKETS WITH COPIES OF ALL ID'S. NO ID, NO PACKET.

Packet Pick Up Parking

Parking for packet pickup is located at the Marine Emporium in the Channel Islands Harbor. Park just South of the venue, in the area denoted in green outline below.



Santa to the Sea Half Marathon and 5k

Race Day Packet Pickup (Upgrade Option)

Sunday December 8, 2024- There is **no race day packet pickup** unless you **purchased during registration**. For those of you **who did purchase** Race Day Packet Pick Up simply go to your respective start lines and your bib will be waiting for you at VIP Packet Pick Up area. Your shirt and goodie bag will be waiting for you at the finish line.

- **Half Marathon Race Day Packet Pick Up Location:** At the VIP Packet Pick Up table in front of Santa, 2801 Ventura Blvd. Oxnard CA 93036-park at the Palms Shopping Center and take the shuttle over.
- **Quarter Marathon Race Day Packet Pick Up Location:** See STTS staff member after you get dropped off at Plaza Park 500 S C St, Oxnard, CA 93030 - park at the Palms Shopping Center and take the shuttle over.
- **5k Race Day Packet Pick Up Location:** Visit the Bib Pick Up Tent inside Santa's Village located next to the Finish Line. Marine Emporium Landing: 3600 Cabezone Cir. Oxnard CA 93035

Race Day Registration (Not an Option)

There **WILL NOT** be any race day registrations.

Bib By Mail

If you purchased the option for bib by mail, you will receive your bib the week before race day. Simply show up to the start with your bib, and when you finish, head over to the Race Shirts tent to collect your shirt and goodie bag.

If you did not receive your bib before December 6th, email info@fastgreenracing.com ASAP so we can take care of you.

Santa to the Sea Half Marathon and 5k

Half Marathon

Start Time/ Location

Race Start -Sunday 12/8/24 - 7:30 am

Location -2801 Ventura Blvd. Oxnard CA 93036. (See [Shuttles](#) for Parking Info)

Aim to arrive **60-75** min before your event to give yourself enough time to park, get to your start line shuttle (shuttles are only for the half and quarter marathon runners), use the bathroom, warm up and walk to the start line.

Course Description

This is a flat and fast course. Santa to the Sea Half Marathon is great for veteran runners, as well as first-timers. For many, this race has become one of their favorites. Along the course, you will be encouraged and supported by local spectators and volunteers. You'll also be motivated musically by the many bands we have lined up along the course. This point-to-point course starts at the historic Santa Claus, off the 101 freeway, runs through Oxnard's famous strawberry fields, then through downtown Oxnard and beautiful Plaza Park. Next will be historic Candy Cane Lane, where the homes are decorated for the holidays. Finally, you're off to the Pacific Ocean, the beach, and finishing at the Marine Emporium Landing in the Channel Islands Harbor.

Rolling Course Cutoff

**New for 2024: Rolling Course Cutoffs/Rules of the Road

Oxnard Police has asked us to implement a rolling course cutoff this year. If you're planning on running a **17 min/mile pace or slower** be sure to read this information. Aid Stations and Course Signage may be picked up if you do not make it to these key locations listed below:

- 8:30 am (Approx Mile 3.25)- Any runner not past the Rice/Sturgis intersection will be required to move to the shoulder and obey the Rules of the Road. Aid stations prior to this point will be picked up. We will have SAG to take you to the Finish Line if needed.
- 9:20am (Approx Mile 6.5)- Any runner not past Plaza Park will be required to move to the shoulder and obey the Rules of the Road. Aid stations prior to this point will be picked up. We will have SAG to take you to the Finish Line if needed.
- 10am- (Approx Mile 9.5)- Any runner not past the Victoria/Wooley intersection will be required to move to the shoulder and obey the Rules of the Road. Aid stations prior to this point will be picked up. We will have SAG to take you to the Finish Line if needed.

Santa to the Sea Half Marathon and 5k

Aid Stations

There are 8 Aid Stations out on the Santa to the Sea course roughly 1 to 2 miles apart. Water will be provided at the Start Line and Finish Line as well.

- Water stations will be located approx. at miles: 1.5, 3.5, 5.5, 6.5, 8, 10.25, 11.5, and 12.25
- Electrolyte drink will be at every aid station except the first one
- Aid Station at mile 8 (first station after the halfway point at Plaza Park) will have gels. (Half marathoners only)
- Basic First AID will be available at all water stations.

*Distances are approximate

Bathrooms

Porta-Potties and/ or permanent bathrooms will be located at:

- Start Lines
- On Course at every aid station
- The Finish area

Santa to the Sea Half Marathon and 5k

Course Map



Santa to the Sea Half Marathon and 5k

Shuttles

Start Line Shuttles (for athletes only NO SPECTATORS) Runners will park and board the shuttles located on N Solar Dr for a quick shuttle ride over to the start line.

Location/Parking- 2000-2201 Outlet Center Drive, Oxnard, 93036 at the Palms Outlet Center across the street from the Garden Inn hotel. See map below. Parking is first come first serve.

Time- Shuttles will run from 5:15 AM to 7:00 AM

- Take Shuttle Marked “**Half Marathon Start Line**”

*There will be NO shuttles in the morning taking runners from the Finish Line to the Half Start Line or Quarter Start Line. **You must park at the Palms Outlet Center if you expect to make it to the start line on time.***



Return Shuttles

Location- Return Shuttles from the Finish Line back to the Palms Shopping Center will pick up along Harbor Blvd directly adjacent to the Santa's Village.

Time- Return shuttles will run from 9:00 AM to 1:00 PM

Half Marathon Start Line Parking

We highly recommend parking at the Palms Shopping Center and utilizing our free shuttles.

Santa to the Sea Half Marathon and 5k

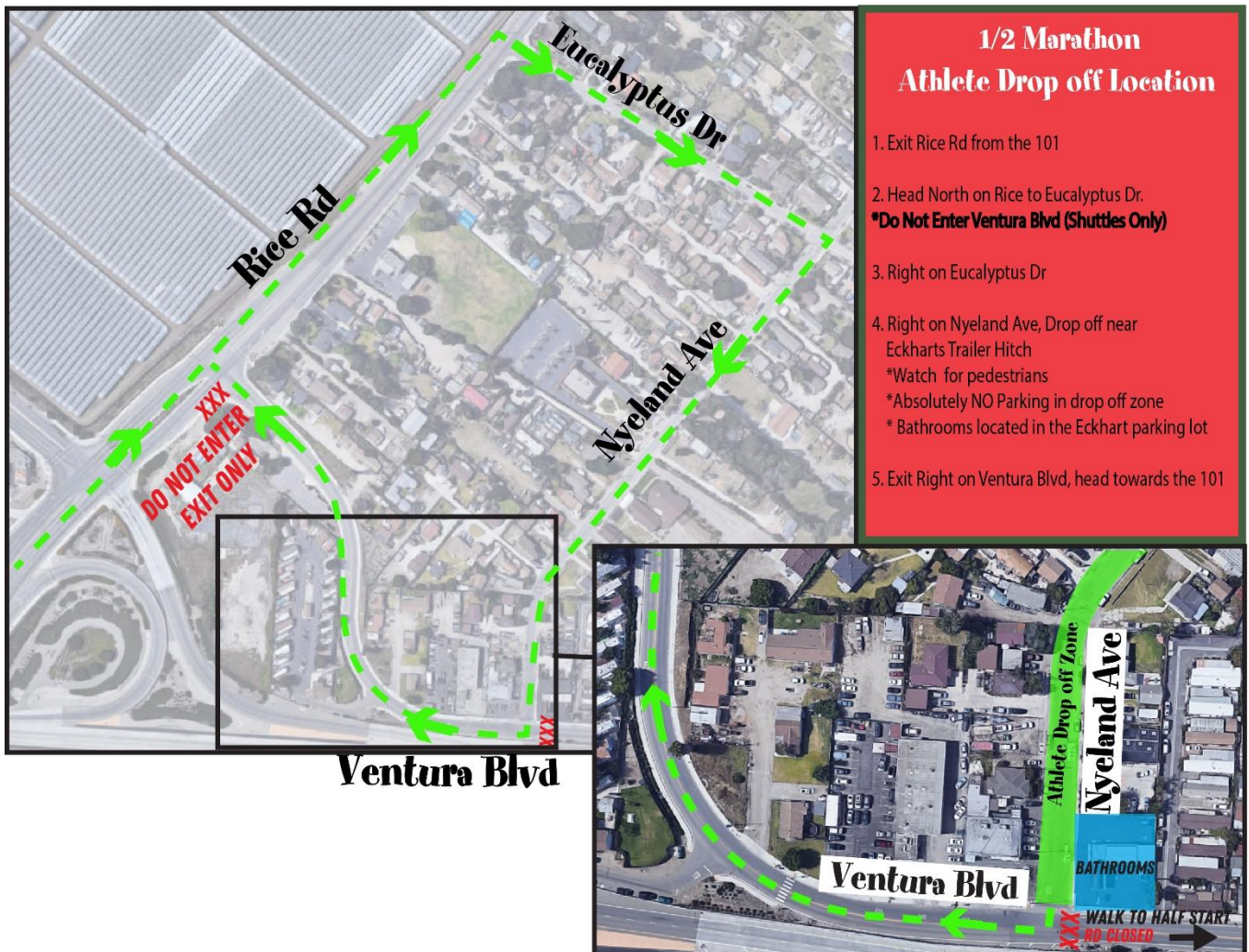
Start line parking is very limited and is located in the neighborhood of Nyeland Acres directly to the North of Ventura Blvd behind the Santa statue. Access to the neighborhood is at the intersection of Friedrich Rd and Santa Clara Ave.

There are no shuttles back to start line parking. You will have to get yourself back to your car unless you park at the Palms Shopping Center.

Athlete Drop Off for Half Marathon

If you wish to drop off your loved ones, we highly recommend dropping them off at the shuttle drop off area at the Palms Outlet Center and letting them take the shuttle over to the start.

However, we have designated “Athlete Drop off” area closer to the start line if taking the shuttle is not an option. To access, head north on Rice Rd from Hwy 101 and turn right onto Eucalyptus Dr then turn Right onto Nyeland Ave. Head down and drop off near Eckhart Trailer Hitch (where the Bathrooms are located). **ABSOLUTELY NO PARKING IN THE ATHLETE DROP OFF AREA.** Please watch for other runners/pedestrians and then exit Right onto Ventura Blvd. Head over to the finish line where there is plenty of parking.



Santa to the Sea Half Marathon and 5k

Finishers Medals (not to scale)



Awards

Overall top 3 men/women in the Half Marathon will receive an award. If you think you won an award, simply head to our Awards table and check in. No need to wait for an awards ceremony.

Age Group top 3 men/women in the Half Marathon and will be available to be picked up at the Awards table. No need to wait for an awards ceremony. Simply go to the table if you think you won something and our volunteers there will double check and give you what you won.

Santa to the Sea Half Marathon and 5k

Age groups are:

14 and under, 15-19, 20-24, 25-29, 30-34, 35-39, 40-44, 45-49, 50-54, 55-59, 60-64, 65-69, 70-74, 75+

Costume contest

Be a part of the Costume Contest and stand out!

You'll be judged for originality, enthusiasm and difficulty to run in.

Judges will score you from 1-10 (judges are on the left as you cross the finish line).

Make sure your bib is visible to the judges as you pass the finish line. If you think they missed you visit the VIP tent after you finish. Cut off times for judging is 15 mins before your Costume Contest Ceremony begins. ([See schedule on page 5](#) for costume contest ceremony times)

Costume Contest Cash Payout Categories-

Top 3 winners in the following Events will receive Cash Prize Money!

- Half Marathon/Quarter Marathon Event- 1st Place: \$100, 2nd Place: \$50, 3rd Place: \$25 ****Half Marathon and Quarter Marathon runners are all scored under the same Event. Meaning 1st, 2nd or 3rd could come from either event.*
- 5K Event- 1st Place: \$100, 2nd Place: \$50, 3rd Place: \$25
- Kids 1k Event- will receive gift card prizes only.

Wave Starts

The race will start in one big wave. However, we will have pace flags at the start line to help you line up appropriately. Please take a look at the flags pace times and line up behind the flag that best matches your expected finish time. This will help ensure everyone has a smooth start. PLEASE BE COURTEOUS TO YOUR FELLOW RUNNERS AND START WHERE APPROPRIATE FOR YOUR EXPECTED FINISH TIME.

Pace Teams

We have set up pacers for you to help many achieve their goals. Pace groups are as follows;

- 1:30 (approx. 6:52/ mile)
- 1:40 (approx. 7:38/ mile)
- 1:50 (approx. 8:23/ mile)
- 2:00 (approx. 9:10/ mile)
- 2:10 (approx. 9:55/ mile)
- 2:20 (approx. 10:41/ mile)
- 2:30 (approx. 11:27/ mile)
- 2:45 (approx. 12:35/ mile)

Santa to the Sea Half Marathon and 5k

- 3:00 (approx. 13:44/ mile)

***Pace groups are subject to change without notice and are not guaranteed

Gear Check

Gear Check will be available at the start line near the Santa Statue on Ventura Blvd, courtesy of UPS. Drop your gear into a clear bag (provided) and mark the tag with your bib number. Once you finish your run look for the Gear Check Tents in our Santa's Village at the finish line.

CLEARLY MARK your bib number. Do not put valuables in your Gear Check Bag.

***Neither Santa to the Sea Half Marathon and 5k or any of its sponsors, affiliates nor volunteers are responsible for lost, stolen or damaged bags / items. Do not leave valuables in your checked bag!!*

Santa to the Sea Half Marathon and 5k

Quarter Marathon

Start Time/ Location

Race Start -Sunday 12/8/24 - 7:40 am

Aim to arrive **75 - 80** min before your event to give yourself enough time to park, get to your shuttles (shuttles are only for the half and quarter marathoner runners), use the bathroom, and walk to the start line.

Location - 500 S C St, Oxnard, CA 93030 (See [Shuttles](#) for Parking Info)

Course Description

Our newest event, is a flat and fast course. Santa to the Sea Quarter Marathon is great for veteran runners, as well as first-timers looking to run further than a 5k but not quite ready for a half marathon. Along the course, you will be encouraged and supported by local spectators and volunteers. You'll also be motivated musically by the many bands we have lined up along the course. This point-to-point course starts at the beautiful Plaza Park in Downtown Oxnard, and runs through the historic Candy Cane Lane, where the homes are decorated for the holidays. Then, you're off to the Pacific Ocean, the beach, and finishing at the Marine Emporium Landing in the Channel Islands Harbor.

Aid Stations

There are 4 Aid Stations out on the Santa to the Sea course roughly 1 to 2 miles apart. Water will be provided at the Finish Line as well.

- Water stations will be located at miles: 1.5, 3.75, 5, and 5.75
- Electrolyte drink will be at every aid station
- Basic First AID will be available at all water stations.

*Distances are approximate

Bathrooms

Porta-Potties and/ or permanent bathrooms will be located at:

- Start Lines
- On Course at every aid station
- The Finish area

Santa to the Sea Half Marathon and 5k

Course Map



Santa to the Sea Half Marathon and 5k

Shuttles

Start Line Shuttles (for athletes only NO SPECTATORS) Runners will park and board the shuttles located on N Solar Dr for a quick shuttle ride over to the Quarter Marathon Start Line.

Location/Parking- 2000-2201 Outlet Center Drive, Oxnard, 93036 at the Palms Outlet Center across the street from the Garden Inn hotel. See map below. Parking is first come first serve.

Time- Shuttles will run from 5:15 AM to 7:00 AM

- Take Shuttles Marked “Quarter Marathon Start Line”

There will be NO shuttles in the morning taking runners from the Finish Line to the Half Start Line or Quarter Start Line. You must park at the Palms Outlet Center if you expect to make it to the start line on time.



Return Shuttles

Location- Return Shuttles back to the Palms Shopping Center from the finish area will pick up along Harbor Blvd directly adjacent to the Santa's Village.

Time- Return shuttles will run from 9:00 AM to 1:00 PM

Santa to the Sea Half Marathon and 5k

Quarter Marathon Start Line Parking

We highly recommend parking at the Palms Shopping Center and utilizing our free shuttles.

Start line parking is very limited and is in the surrounding area of Plaza Park in Downtown Oxnard. It is your responsibility to find legal parking if you choose to not utilize our free shuttles. There are no shuttles back to start line parking. You will have to get yourself back to your car unless you park at the Palms Shopping Center.

Athlete Drop Off Quarter Marathon

If you wish to drop off your loved ones, we highly recommend dropping them off at the shuttle drop off area at the Palms Outlet Center and letting them take the shuttle over to the start.

However, we have designated an "Athlete Drop off" area closer to the Quarter Start Line if our shuttle service is not an option. Simply drive to Plaza Park at 500 S C St, Oxnard, CA 93030 and drop off along 5th or C St. **NOTE-** B St. will be closed to vehicular traffic, use C Street or 5th to drive to Plaza Park. Watch for pedestrians then head over to the finish line where there is plenty of parking.



Santa to the Sea Half Marathon and 5k

Finishers Medals (not to scale)



Awards

Overall top 3 men/women in the Quarter Marathon will receive an award. If you think you won an award, simply head to our Awards table and check in. No need to wait for an awards ceremony.

Age Group top 3 men/women in the Quarter Marathon and will be available to be picked up at the Awards table. No need to wait for an awards ceremony. Simply go to the table if you think you won something and our volunteers there will double check and give you what you won.

Santa to the Sea Half Marathon and 5k

Age groups are:

14 and under, 15-19, 20-24, 25-29, 30-34, 35-39, 40-44, 45-49, 50-54, 55-59, 60-64, 65-69, 70-74, 75+

Costume contest

Be a part of the Costume Contest and stand out!

You'll be judged for originality, enthusiasm and difficulty to run in.

Judges will score you from 1-10 (judges are on the left as you cross the finish line).

Make sure your bib is visible to the judges as you pass the finish line. If you think they missed you visit the VIP tent after you finish. Cut off times for judging is 15 mins before your Costume Contest Ceremony begins. ([See schedule on page 5](#) for costume contest ceremony times)

Costume Contest Cash Payout Categories-

Top 3 winners in the following Events will receive Cash Prize Money!

- Half Marathon/Quarter Marathon Event- 1st Place: \$100, 2nd Place: \$50, 3rd Place: \$25 ***Half Marathon and Quarter Marathon runners are all scored under the same Event. Meaning 1st, 2nd or 3rd could come from either event.

Wave Starts

The race will start in one big wave. PLEASE BE COURTEOUS TO YOUR FELLOW RUNNERS AND START WHERE APPROPRIATE FOR YOUR EXPECTED FINISH TIME. **Also be aware of stepping off the curb in the first 50 meters following your start (at Plaza Park and C St.) You might not see it when you are still bunched together.

Gear Check

Gear Check will be available at the start line in Plaza Park. Drop your gear into a clear bag (provided) and mark the tag with your bib number. Once you finish your run look for the Gear Check Tents in our Santa's Village at the finish line.

CLEARLY MARK your bib number. Do not put valuables in your Gear Check Bag.

***Neither Santa to the Sea Half Marathon and 5k or any of its sponsors, affiliates nor volunteers are responsible for lost, stolen or damaged bags / items. Do not leave valuables in your checked bag!!*

Santa to the Sea Half Marathon and 5k

5k

Start Time/ Location

Race Start -Sunday 12/8/24 - 7:30 am

Aim to arrive **60-75** min before your event to give yourself enough time to park, use the bathroom, and walk to the start line.

Location- Marine Emporium Landing: 3600 Cabezone Cir. Oxnard, CA 93035

Course Description

The Santa to the Sea 5K, is a flat and fast course. The 5K is a great race for beginners and veterans alike. We see more first-timers every year, many of whom return to run the Half Marathon or Quarter Marathon the following years. Additionally, it's a perfect race for families of all ages to run together and celebrate a great accomplishment. The 5K STARTS and FINISHES at Marine Emporium Landing in the Channel Islands Harbor. After the Start, immediately turn right onto Harbor, then left onto Los Feliz. The race course goes along Sunset Lane to Mandalay Beach Rd. Runners will turn left onto Mandalay Beach Rd and follow it around to Falkirk Ave. Then Left through the Oxnard Beach Park parking lot and back onto the side walk, where runners will loop around and merge onto the Half/Quarter Marathon route and head back to cheering crowds at the Finish Line.

Aid Stations

There are 2 Aid Stations out on the Santa to the Sea 5K course. Water will be provided at the Start Line and Finish Line as well.

- Water stations will be located at miles: 1.5 and 2.5
- Electrolyte drink will be at both stations
- Basic First AID will be available at all water stations.
- *Distances are approximate

Bathrooms

Porta-Potties and/ or permanent bathrooms will be located at:

- Start Lines
- On Course at both Aid Stations
- The Finish area

Santa to the Sea Half Marathon and 5k

Course Map



Santa to the Sea Half Marathon and 5k

Finishers Medals (not to scale)



Awards

Overall top 3 men/women in the 5k will receive an award. No need to wait for an awards ceremony. Simply go to the Awards table if you think you won something and our volunteers there will double check and give you what you won.

Age Group top 3 men/women in the 5k and will be available to be picked up at the Awards table. No need to wait for an awards ceremony. Simply go to the table if you think you won something and our volunteers there will double check and give you what you won.

Santa to the Sea Half Marathon and 5k

Age groups are:

14 and under, 15-19, 20-24, 25-29, 30-34, 35-39, 40-44, 45-49, 50-54, 55-59, 60-64, 65-69, 70-74, 75+

Costume contest

Be a part of the Costume Contest and stand out!

You'll be judged for originality, enthusiasm and difficulty to run in.

Judges will score you from 1-10 (judges are on the left as you cross the finish line).

Make sure your bib is visible to the judges as you pass the finish line. If you think they missed you visit the VIP tent after you finish. Cut off times for judging is 15 mins before your Costume Contest Ceremony begins. ([See schedule on page 5](#) for costume contest ceremony times)

Costume Contest Cash Payout Categories-

Top 3 winners in the 5k Costume Contest will receive Cash Prize Money!

- 5K Event- 1st Place: \$100, 2nd Place: \$50, 3rd Place: \$25

Gear Check

There is no gear check for the 5k. Simply keep your change of clothes and other gear in your car as plentiful parking is nearby.

Santa to the Sea Half Marathon and 5k

Kids 1K

Start time/ Location

Race Start -Sunday 12/8/24 - 8:30 am

Aim to arrive **45 - 60** min before your event to give yourself enough time to park, use the bathroom, and walk to the start line.

Location- Marine Emporium Landing: 3600 Cabezone Cir. Oxnard, CA 93035. Start Line is near the grassy area just south of our Medical Tent and Finish Area. (See [Spectators / Parents](#) below for Map)

Race Day Packet Pick Up

Free Race Day Packet Pick Up is available for the Kids 1k. Check in begins at 7:45am. Please arrive at our Expo/Kids Zone area early to check in, as parking is limited. This is not a timed event. All of our Kid's 1K Fun Run participants will receive a Santa to the Sea official shirt and Medal, after finishing.

Course Description

Our supervised, non-competitive Kid's 1K Fun Run starts near the Santa to the Sea finish line in the grassy just south of the Medical Tent. Look for the inflatable arch on the path near the marina. With volunteers cheering along the way, the children will follow a paved and safe route, ending with a final sprint in the official finisher's chute. Parents are encouraged to run with younger children or they may cheer along the course. The Kids 1K Fun Run is recommended for children 3 and up.

Aid Stations

There will not be any aid stations on the Kids 1k route. Plenty of water and refreshments will be available at the Finish Line.

Bathrooms

Porta-Potties and/ or permanent bathrooms will be located at:

- The Finish area

Santa to the Sea Half Marathon and 5k

Kids 1K Start line Parking

Parking for the Kid's 1k is located near the Marine Emporium in the Channel Islands Harbor. Marine Emporium Landing: 3600 Cabezone Cir. Oxnard, CA 93035

**** Do Not Park on Harbor Blvd**



Costume Contest

Kids too can be a part of the Costume Contest. They'll be judged for originality, enthusiasm and difficulty to run in.

Judges will score you from 1-10 (judges are on the left as you cross the finish line). Make sure your bib is visible to the judges as you pass the finish line. If you think they missed you visit the VIP tent after you finish. Cut off times for judging is 15 mins before your Costume Contest Ceremony begins. (See [schedule](#) above for costume contest ceremony)

Costume Contest Awards-

Top 3 winners in the Kids 1k Costume Contest will receive gift card prizes

Santa to the Sea Half Marathon and 5k

Diaper Dash

Start time/ location

Race Start - Saturday 12/7/24- 2:00 PM

Location - On the main stage in Santa's Village at the Marine Emporium Landing:
3600 Cabezone Cir. Oxnard, CA 93035

Course Description

The course will be about 10 feet long on a small stage with coaches (parents or another loved one) on both ends. One starts the baby off and the other coach cheers the baby to the finish line.

Rules

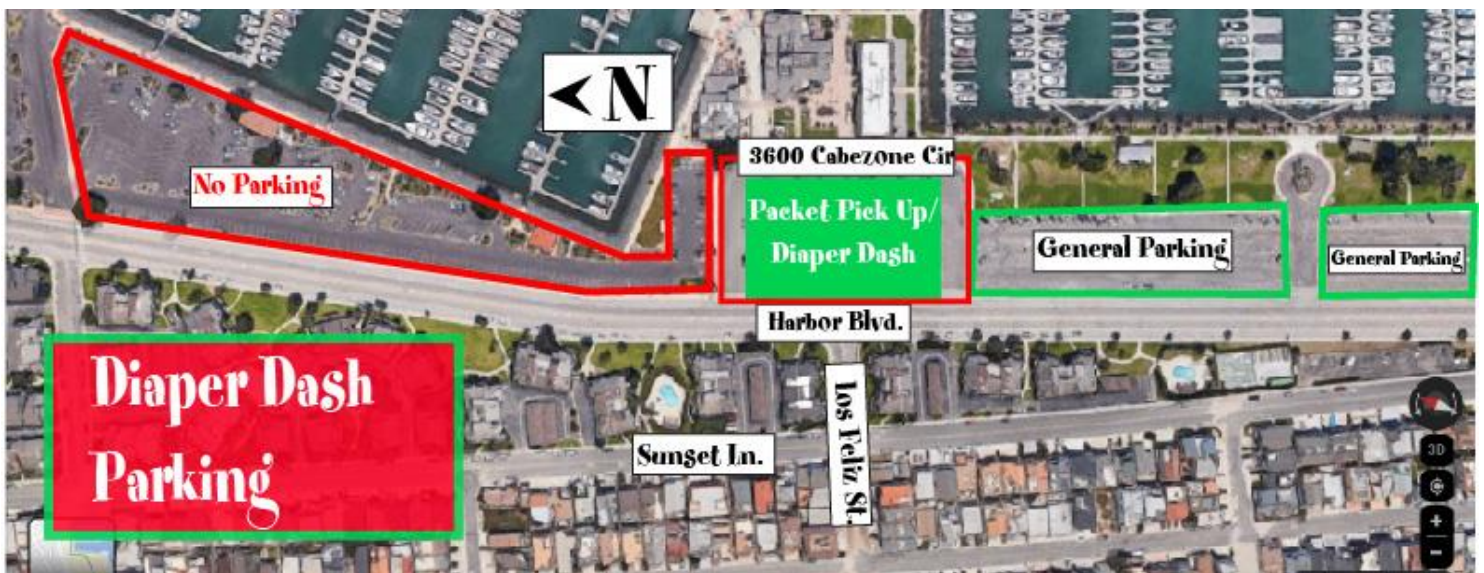
- We will have multiple heats with a few babies in each race.
- The winners will advance to the championship.
- The babies must crawl unassisted, any standing or walking and the babies will be disqualified.

Awards

The overall 1st place baby will receive the coveted Diaper Dash trophy.

All babies will receive a goodie bag.

Diaper Dash Parking



Santa to the Sea Half Marathon and 5k

Photos

Your event photo will be professionally taken in multiple locations by Dan Holmes Photography. Photos will be available for FREE after the event. You will be able to link over from the Santa to the Sea Half Marathon website and we will be sure to include a link on social media and in our post event email.

Timing

All participants will be professionally chip timed by Brooksee Timing. For results, See QR Links placed around Santa's Village or head to SantaToTheSea.com

Live Tracking

Friends and family can follow your progress as you make it through the route. Although not "constant", tracking is live and will alert anyone that signs up that you made it through a specific check point. Checkpoints are located at each start line, at every Half Marathon Mile Marker, Plaza Park, and the Finish Line. To sign up for Live Tracking visit SantaToTheSea.com (*after 12/4/24)

Spectators

Because of our course logistics, the event does not provide a great platform for cheering on your loved one while they are running. The best place to see them running will be at the start line and of course the finish area.

Spectator Parking

Parking spectators is located near the Marine Emporium in the Channel Islands Harbor. Marine Emporium Landing: 3600 Cabezone Cir. Oxnard CA 93035

**** Do Not Park on Harbor Blvd**



Santa to the Sea Half Marathon and 5k

Toy Drive

All runners are asked to bring an UNWRAPPED toy or gift of at least \$20 in value to the event. All runners can drop off their toy at their respective Starting Line or at the Free Packet Pickup on Saturday.

What Kind of Toy/Gift to Bring: In addition to toys, we have many infants (ages 0–6 months) that need sleepers and clothing. We also have many older children who need gifts as well, so please remember to bring something for them. For teens... gift cards to food places, Target, Walmart, etc. are perfect.

What to Wear

Equipment and Clothing

- All participants are encouraged to bring some warm clothes and different shoes for the post-race party.
- Wear something old and warm to the start line. And simply shed the garment and we will pick it up and donate it to GOODWILL.
- Typical race start temperature is 50 degrees
- Typical finish line temperature is 65 degrees
- Wear Sunscreen!!!!

Pay attention to our Facebook page and Website for updated weather info 1 week prior to the event.

Food and Water

This year we are looking forward to bringing back the Pancake Breakfast to your post-race food. Driscoll's will be providing berries for the toppings and Rio Mesa Culinary Students will be providing their excellent sugar cookies for the 4th year in a row. Post-race food will be available for athletes only. Ample water and electrolyte drink will be available at the finish line and near the Toy Drop Area.

Inclement Weather

In the event of inclement weather such as high heat, fire, lightning, tornadoes, hurricanes and the like the Santa to the Sea Half Marathon and 5k, and Garden Acres Inc. reserve the right to eliminate select portions of the course, or cancel the event in order to ensure the safety of racers, volunteers and staff.

Weather can be unpredictable. Please come prepared for chilly morning temps and possible storms.

Santa's Village/ Finish line

After your race, be sure to stick around and enjoy all the vendors, food, music, and just plain fun at the harbor!!!!

Santa to the Sea Half Marathon and 5k

Contact Us

For any questions or concerns that haven't been addressed here, please visit our website or contact us at info@fastgreenracing.com